

# NDA-U-PA0 Surveillance cabinet 24VAC

www.boschsecurity.com



**BOSCH**  
Invented for life



- ▶ Complete power supply and connectivity solution for outdoor use
- ▶ Perfectly matched mechanical interfaces for easy installation on wall, pole or corner
- ▶ Reliable installation with built-in surge protection
- ▶ Weather resistant finish to maintain the cosmetic appearance over the years

Bosch's **Modular Camera Mounts & Accessories** offer a modular range of camera mounts, mounting adapters, camera interface plates and surveillance cabinets. All items are easy to handle and simplify the installations of our cameras across a wide range of applications to suit all of your needs. The mechanical design is extremely robust and suitable for any environment, both indoor and outdoor. The accessories are designed with usability in mind. It's modern and sleek design is a perfect combination of form and function.

## Functions

The surveillance cabinets are specially designed to meet the requirements of the security and surveillance market. The surveillance cabinets provide a power supply for situations without PoE. It is available without a transformer (for direct 24 VAC power input) and with either a 120 VAC or a 230 VAC transformer for mains supply. Each surveillance cabinet offers 100 W output with surge protection. The surveillance cabinet, when used with compatible mount and camera, offers full IP66 and IK10 rated. You can use it as a safe, robust and watertight box in which you can

make your connections or install extra hardware. For more details about compatibility, refer to the Product Selector.

### Universal accessory combinations

You can mount this accessory directly to a wall or ceiling, or use one of these accessories for pole or corner mounting:

- NDA-U-PMAL Pole mount adapter large
- NDA-U-CMT Corner mount adapter

On this accessory you can mount:

- NDA-U-WMT Pendant wall mount
- NDA-U-PMT Pendant ceiling mount

## Certifications and approvals

Environmental		
Salt mist	IEC60068-2-52	
Impact	IK10	
Ingress Protection	IP66	
Region	Regulatory compliance/quality marks	
Europe	CE	NDA-U-PAx

**Parts included**

Quantity	Component
1	Surveillance cabinet 24VAC
1	Quick Installation Guide
1	Safety manual
1	EAC document

**Technical specifications**

**Mechanical**

Dimensions (W x H x D)	170.0 mm x 216.4 mm x 105.0 mm (6.69 in. x 8.52 in. x 4.13 in.)
Weight	2337 g (5.15 lb)
Standard Color	White (RAL 9003)
Construction Material	Aluminum alloy
Mounting	To a wall

**Electrical**

Surge protection on power output	Peak current 21.4 A, peak power 1500 W (10/1000 $\mu$ s)
----------------------------------	---

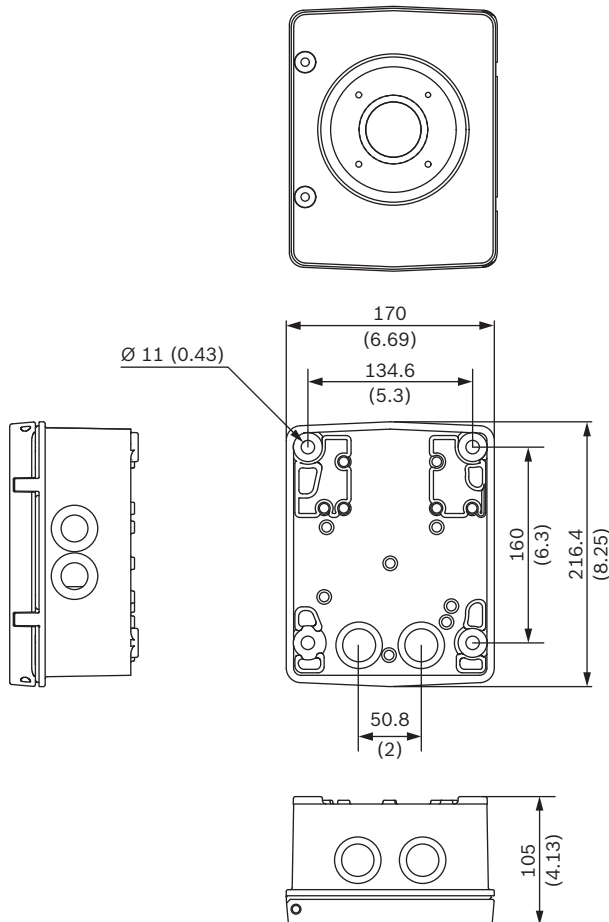
*Dimensions in mm (inch)*

**Ordering information**

**NDA-U-PA0 Surveillance cabinet 24VAC**  
 Power supply box, no transformer, IP66  
 Order number **NDA-U-PA0**

**Accessories**

**NDA-U-WMT Pendant wall mount**  
 Universal wall mount for dome cameras, white  
 Order number **NDA-U-WMT**



**Represented by:**

**Europe, Middle East, Africa:**  
Bosch Security Systems B.V.  
P.O. Box 80002  
5600 JB Eindhoven, The Netherlands  
Phone: + 31 40 2577 284  
emea.securitysystems@bosch.com  
emea.boschsecurity.com

**Germany:**  
Bosch Sicherheitssysteme GmbH  
Robert-Bosch-Ring 5  
85630 Grasbrunn  
Germany  
www.boschsecurity.com

**North America:**  
Bosch Security Systems, Inc.  
130 Perinton Parkway  
Fairport, New York, 14450, USA  
Phone: +1 800 289 0096  
Fax: +1 585 223 9180  
onlinehelp@us.bosch.com  
www.boschsecurity.us

**Asia-Pacific:**  
Robert Bosch (SEA) Pte Ltd, Security Systems  
11 Bishan Street 21  
Singapore 573943  
Phone: +65 6571 2808  
Fax: +65 6571 2699  
apr.securitysystems@bosch.com  
www.boschsecurity.asia